

The logo features a stylized arch above the text. The arch is composed of a blue inner curve and a green outer curve, with the green curve segmented into several rectangular blocks. Below the arch, the word "GRANITE" is written in a bold, green, sans-serif font, and the word "BRIDGE" is written in a blue, sans-serif font directly underneath it.

GRANITE BRIDGE

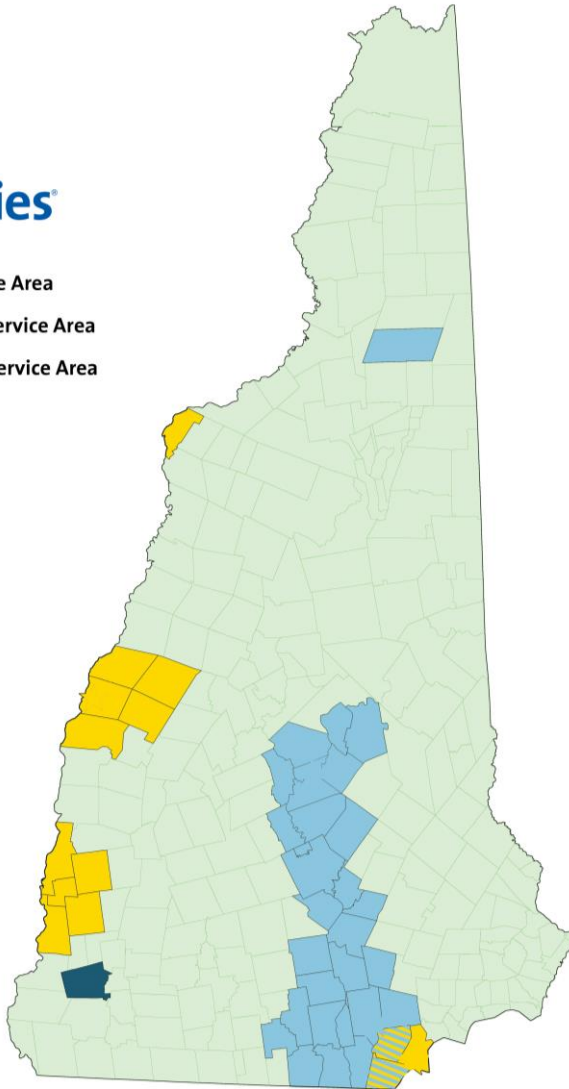
By New Hampshire. For New Hampshire.

Project Update

About Liberty Utilities



- Electric Service Area
- Natural Gas Service Area
- Propane/Air Service Area



- 92,000 gas customers in 31 communities (I-93 Corridor)
- 43,000 electric customers in 21 communities (Salem area and Upper Valley / CT River)
- Headquartered in Londonderry
- 340 employees
- Natural gas customers served via interstate pipelines, 3 liquefied natural gas (LNG) and 4 propane storage facilities
- 5 customer walk-in centers (Concord, Lebanon, Salem, Londonderry & Keene)

Granite Bridge Overview

Granite Bridge is a \$340 million natural gas pipeline and storage project designed to serve the residents and businesses of New Hampshire.

Pipeline

- 26 mile pipeline between Exeter and Manchester
- Located completely within NHDOT right-of-way along Route 101
- Use an “Energy Infrastructure Corridor”

Storage Facility

- 2 BCF liquefied natural gas (LNG) tank
- Located on 140 acre site in Epping (adjacent to Route 101)
- Full containment facility with on-site safety systems

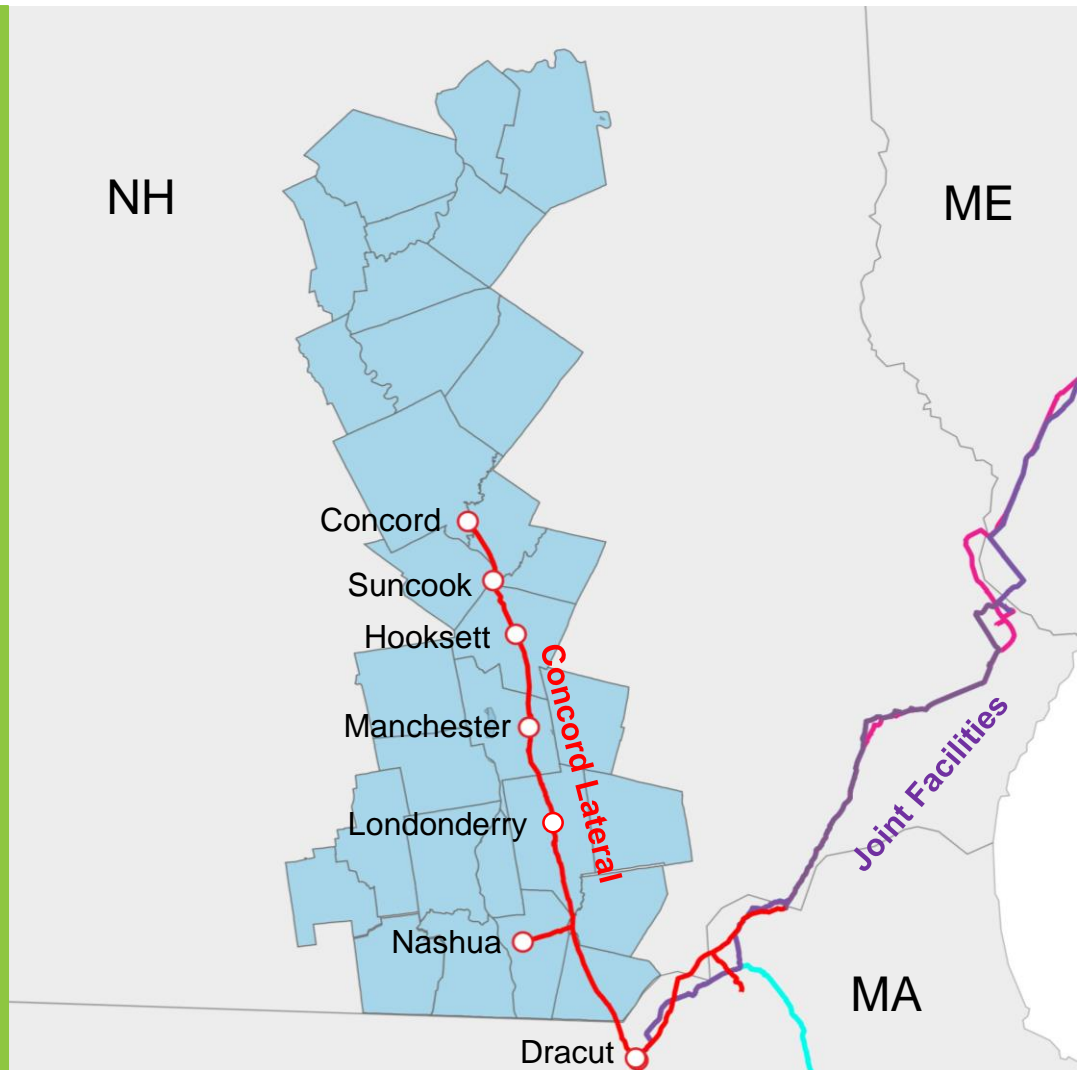
Needed Infrastructure Investment

Concord Lateral provides natural gas to southern and central New Hampshire

Concord Lateral has reached capacity

Without additional infrastructure:

- Limited natural gas supply
- Restricted economic growth
- Increased reliance on other heating fuels



Granite Bridge Pipeline

New 16" pipeline linking existing infrastructure

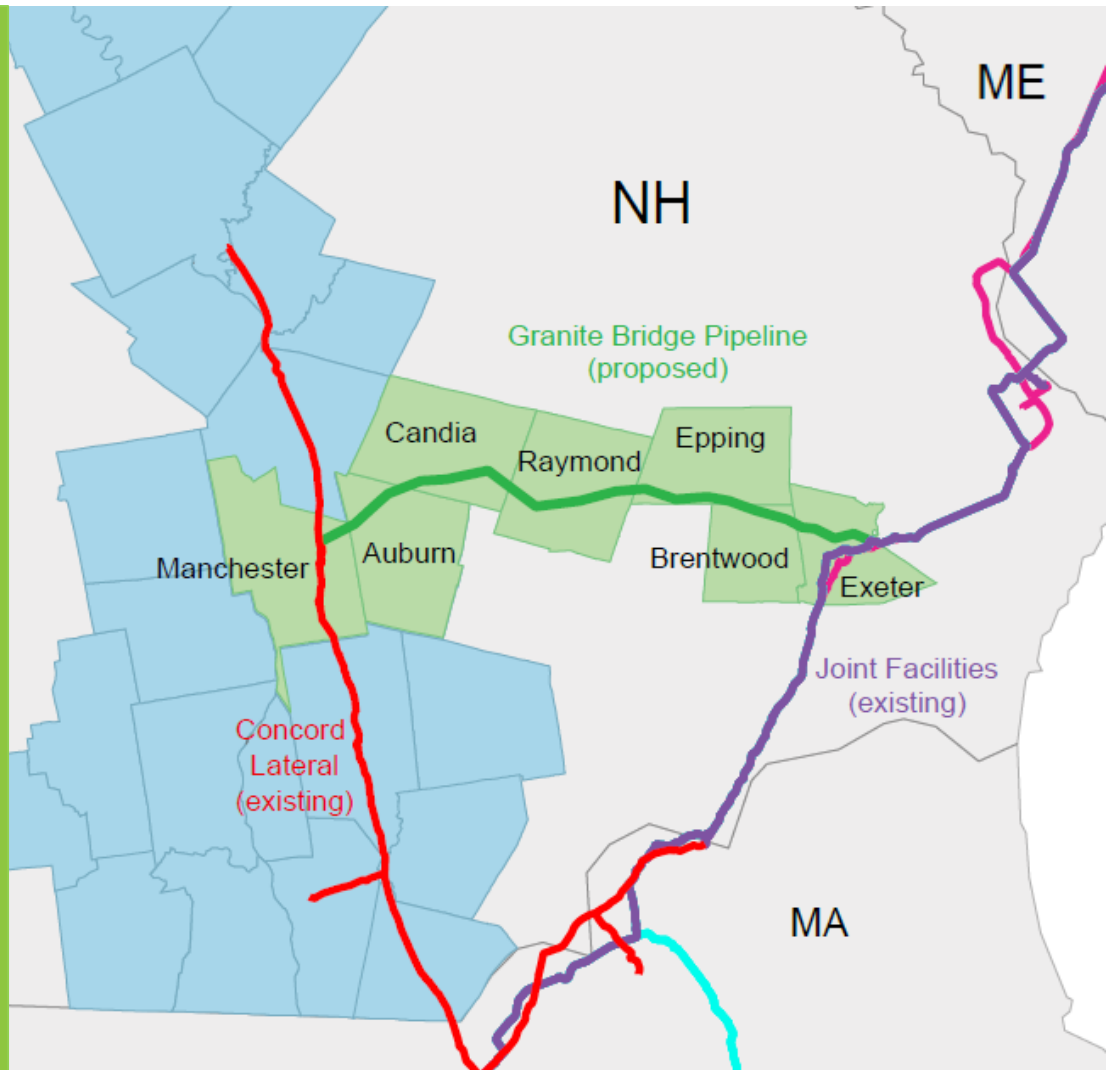
Located in NHDOT right-of-way along Route 101

Utilize an Energy Infrastructure Corridor

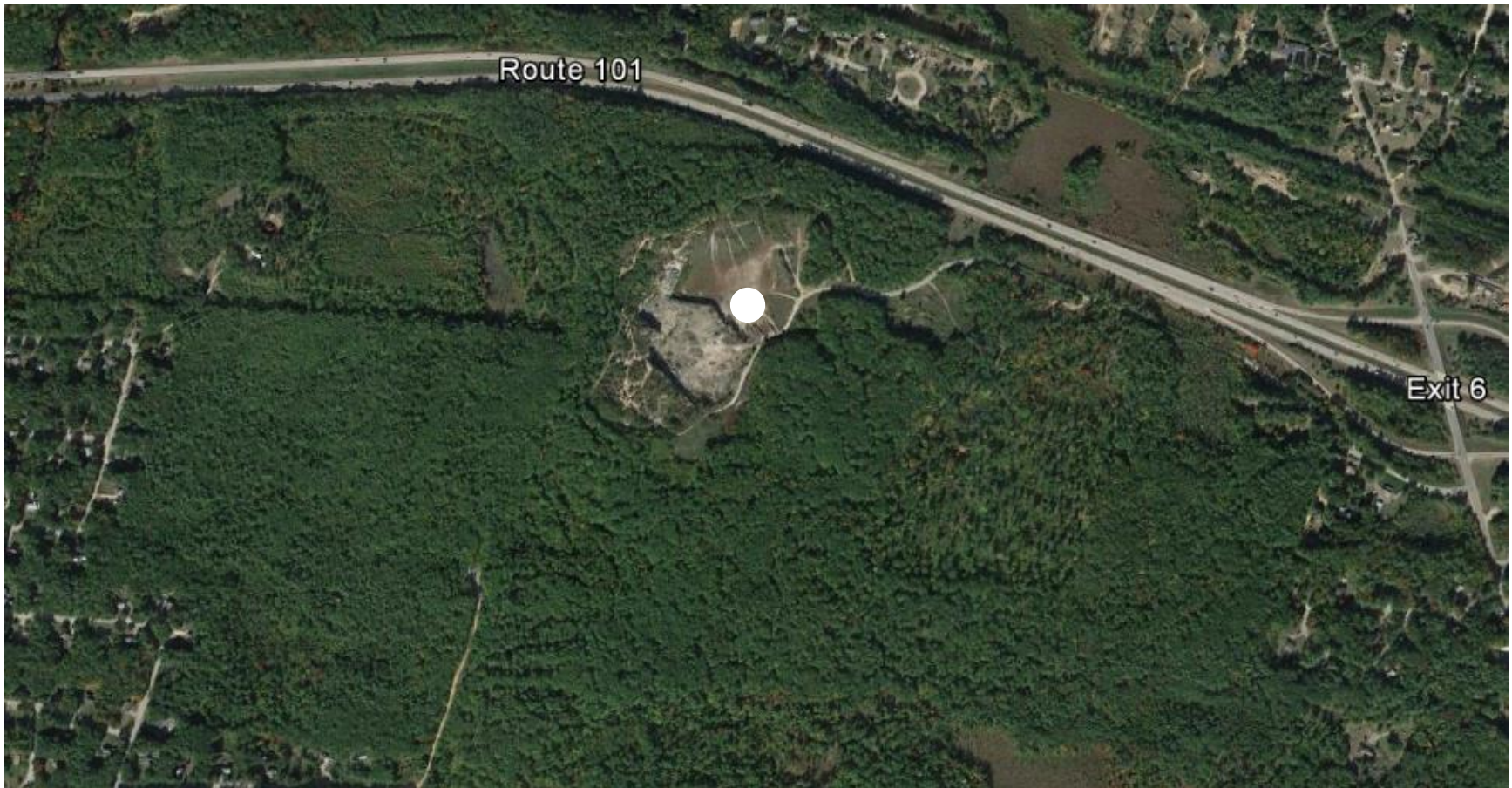
26 mile route between Manchester and Exeter

No eminent domain or FERC preemption

Lowest cost option to meet customers' needs



Granite Bridge Storage Facility - Epping



- 140 acre lot adjacent to Energy Infrastructure Corridor – Route 101
- Total facility footprint – 15 acres
- Site is an abandoned quarry, reducing visual impact

Commitment to Safety

The safety of our customers, employees and the public is our highest priority and a core value of Liberty Utilities

- LNG storage has been safely used for over 70 years to serve customers
- Granite Bridge has been designed to achieve the highest level of safety:

- Full x-ray of all pipeline welds, inspections at fabrication mill
- Pipeline buried 48” underground, within NHDOT right-of-way
- Tested to 150% of maximum allowed operating pressure before being placed into service
- Pressure monitoring and automatic shutoff valves along the pipeline

- Full containment LNG storage tank (tank within a tank)
- Impoundment areas to contain liquid, in unlikely event of a release
- On-site automatic fire protection and safety systems

- 24/7 on-site and remote (Londonderry) monitoring & control of storage facility and pipeline
- Coordination and training with first responders

Savings to Customers

Granite Bridge compared to available alternatives, over 20 years:

\$710 million

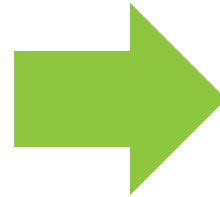
Savings from new pipeline compared to alternative capacity options

\$240 million

Savings from LNG Storage Facility compared to alternative supply contracts

\$950 million

Total project savings



LNG facility would have saved customers:

\$40 million in 2013-14

\$24 million in 2014-15

\$12 million in 2015-16

\$ 9 million in 2016-17

\$20 million in 2017-18

\$105 million

Last 5 winters

Project Benefits

Continued natural gas for customers in New Hampshire

- Increased system reliability for customers
- Retirement of 50+ year old propane facilities
- Reduced propane and LNG truck traffic to Nashua, Manchester, Concord and Tilton
- Natural gas service along Route 101
- Increased energy efficiency availability
- Reduction in CO₂, Particulate Matter (PM), Nitrogen Oxide (NO_x) and Sulfur Dioxide (SO₂)

Granite Bridge Project Team

Pipeline Engineering



Environmental Permitting



Facility Engineering



Field Survey



Geotechnical Engineering



Project Labor

- Agreement with New Hampshire Building Trade Council
- Maximize use of local, New Hampshire workers
- Access to highly-skilled labor pool
- Help keep project on schedule and on budget

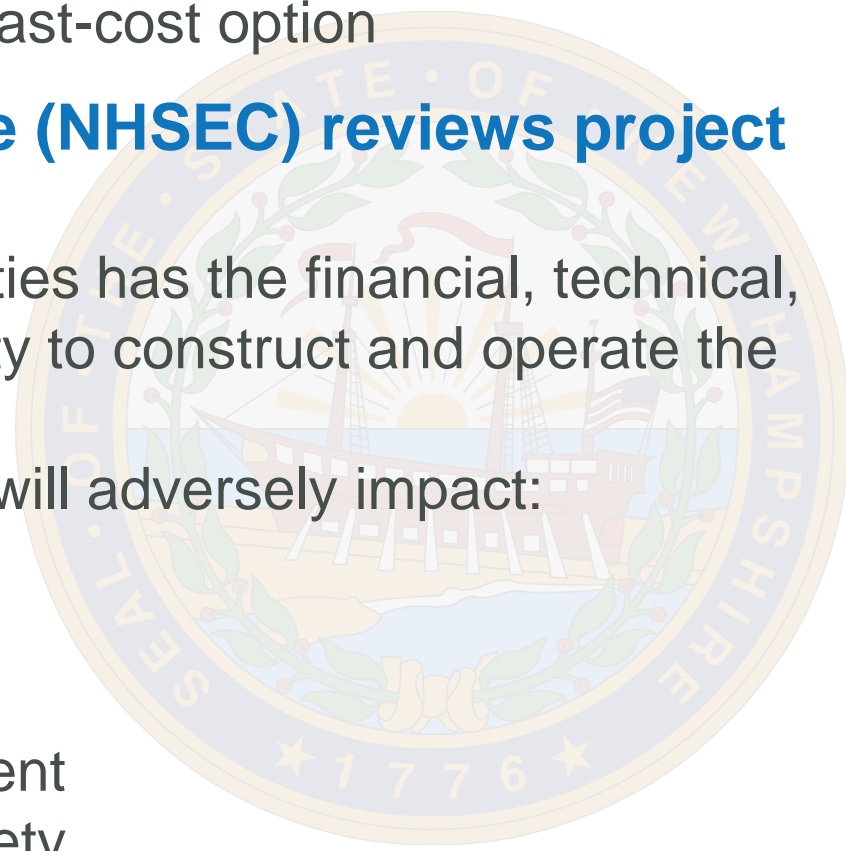
Project Update



- **Reviewing pipeline engineering design with NHDOT**
- **Easement agreement with Exeter**
 - Shortens route
 - Avoids additional river crossing
- **Completing field survey work**
 - Survey right-of-way
 - Wetlands delineation
 - Historic resource identification
 - Updated visual impact
 - Geotechnical work
 - Baseline sound monitoring
- **LNG facility engineering design**
- **Updated project cost estimates**

Regulatory Review Process

- **New Hampshire Public Utilities Commission (NHPUC) reviews the project economics and need**
 - Evaluate projected customer needs
 - Determine if project is least-cost option
- **Site Evaluation Committee (NHSEC) reviews project siting**
 - Determine if Liberty Utilities has the financial, technical, and managerial capability to construct and operate the facilities
 - Determine if the project will adversely impact:
 - aesthetics
 - historic sites
 - air and water quality
 - the natural environment
 - public health and safety



Thank You

For more information:

- www.granitebridgenh.com
- www.facebook.com/GraniteBridgeNH
- twitter.com/GraniteBridgeNH
- info@granitebridgenh.com
- 603-216-3653